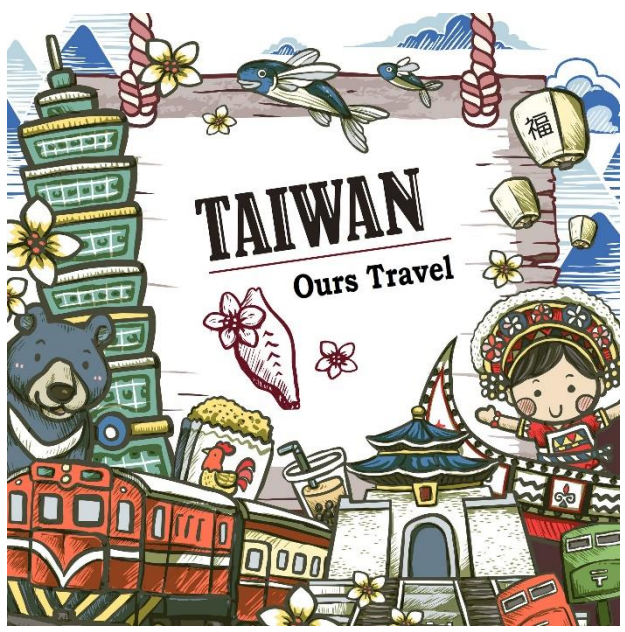




TASTE OF TAIWAN / 9 Days 7 Nights



Scenic Rail Journey

UK — Taipei — Hualien (Taroko Marble Gorge) — Taitung (Chihshang)
— Pingtung — Kaohsiung — Tainan — Chiayi (Alishan) — Taipei — UK

While breathing fresh air and witnessing endless rice fields, the rail journeys provide more comfort, leading you to a real heaven: eastern Taiwan. Not only relaxing atmosphere, but the ingenious, Hakka & Chinese-style cultural experiences for you to visit!

Capital City
Taipei

Tropical Climate
12°C-35°C

Language
Mandarin



DAY 01 / Friday Departure- Flight from UK

DAY 02 / Saturday Welcome to Taiwan!

Our chauffeur driver will greet you at the airport (TPE) arrival hall, then transfer you to the hotel in central Taipei. Depends on the arrival time, of course you are free to take a rest at hotel, walking around nearby, or we recommend you can spend the night visiting the spectacular *XiangShan*, in Chinese means elephant mountain. This is one of the best place affording the *night view of Taipei 101* along the hiking trail. You will need only within 30 minutes to get to the lookout. For dinner, the most well known traditional food or snacks can be found at *night markets*! A big part of Taiwanese culture and foodies will be able to experience local cuisine at reasonable prices from friendly locals. We recommend you taste the unique flavours of their traditional recipes such as Giant Fried Chicken Steak, Tempura, Bubble Tea, Oyster Vermicelli, Oyster Omelet, Fried Buns and of course, the notorious Stinky Tofu.

Wonderful night View
at XiangShan





TASTE OF TAIWAN / 9 Days 7 Nights

DAY 03 (SUN)

Taipei — Hualien (Qingshui Cliff — Taroko Marble Gorge)



Departure from your hotel lobby at 8 a.m., then head to Taipei main station for the **train: PUYUMA 412** (Taipei 08:48-Hualien 11:01 estimated) with your guide. For 40 min drive (approx.) to **Qingshui Cliff**: a 21 km length of coastal cliffs in Hualien. : a 21 km length of coastal cliffs in Hualien. The tallest peak, Qingshui Mountain, rises 2408 meters (the highest coastal cliff in Taiwan) directly from the Pacific Ocean. The cliff is located at the southern part of the Suhua Highway that connects the counties of Yilan and Hualien in eastern Taiwan. Another 40 min drive (approx.), **Taroko Marble Gorge: Shakadang Trail or Lushui Trail, Eternal Spring Shrine (Changchun Temple), Yanzikou (Swallow Grotto), Cihmu Bridge** is famous for its spectacular mountains, marble canyons, and cliffs stretch along Liwu River. After millions of years of wind erosion, the marble rocks were exposed and cut by Liwu River, creating impressive grand canyons. Such special geography has also bred special flora and fauna in this area. At **Yanzikou (Swallow Grotto)** the rock cliffs of the Liwu River gorge seem to reach to heaven while the river runs its swiftest and the distance between the gorge walls so narrow that they almost seem to touch each other. You can enjoy the sights of the Liwu River from nearly straight above the water, the potholes on the cliff faces, the springs sprinkled along the lower parts of the walls, as well as the famous rock formation “Chieftain’s profile rock”.

Hualien — Taitung (Chihshang)

Enjoy your breakfast, also the hotel amenities, such as SPA, swimming pool, etc in the morning. The journey today will start at 11:20 from hotel to Hualien station (1 hour drive approx.) for the **train: PUYUMA 422** (Hualien 13:08-Chihshang 14:32 estimated).

Dapo Pond: There are rich natural resources of wildlives. In summer you will be able to see a full pond of lotus flowers in pink. **Mr. Brown Avenue & Taitung’s Takeshi Kaneshiro tree** is famous for the TV commercial of Mr. Brown Coffee (a local coffee brand). The “avenue” is a single lane pathway in the middle of the green paddy fields. Takeshi Kaneshiro Tree, is named after Taiwanese-Japanese actor in EVA Air TV commercials. We’ll take a few hours to cycle on exclusive bike paths that pass through rice paddies (the bike will be provided & included, or you can choose to pay for upgrading!). That evening, the luxurious resort facilities provide bar, cafe and outdoor hot spring, etc.

DAY 04 (MON)



DAY 05 (TUE)

Taitung — Pingtung — Kaohsiung



On day 7, say goodbye to beautiful Chihshang, we will drive (an hour approx.) to catch the **train: Tze-Chiang 372** (Taitung 10:06-Pingtung 12:40 estimated) toward to southern Taiwan: Pingtung! Just 30 min away by drive (approx.), in forested mountain, **Taiwan Indigenous Cultural Park** displays 16 different communities with traditional indigenous houses, art crafts and introduces their life style, traditions to tourists. These indigenous communities might be similar, but have developed different languages, costumes, songs, etc. Most historical linguists consider Taiwan to be the original homeland of the Austronesian language family. Nearby, there’s a **Shanchuan Glass Suspension Bridge**, designed by the local indigenous artist, Sakuliu Pavavalung, is worth to see.



The accommodation tonight is in **Kaohsiung city** (an hour away by drive approx.), and we encourage you can take a walk near the scenic **Love River area**. Another recommend attraction is **Formosa Boulevard metro station** near **Liuh night market**. The station is rewarded one of the most beautiful metro station in the world due to the design: “**Dome of Light**”. (designed by Italian artist Narcissus Quagliata)



TASTE OF TAIWAN / 9 Days 7 Nights

DAY 06 (WED)

Kaohsiung (Zuoying — Meinung) — Tainan



Morning (09:00) drive from hotel, after 20 min (approx.) ***Zuoying Lotus Lake area*** is noted for its profusion of temples, with the Confucius Temple at its northern edge and, in the south, the ***Dragon and Tiger Pagodas*** (The dragon's throat is the entrance and the tiger's mouth is the exit.) and the ***Spring and Autumn Pavilions***. Two massive pavilions dedicated to Kuan Kung, the God of War, the Spring and Autumn Pavilions were completed in 1951. In front of the pavilions is a statue of Guanyin, the Goddess of Mercy, riding a dragon. According to legend, Guanyin appeared above the clouds riding on a dragon, signifying that believers must erect an image depicting this event between pavilions of summer and autumn: The present-day structures are a result of this vision. We will stop here for about one hour.

Meinung folk village in Kaohsiung to experience unique Hakka culture. ***Paper umbrella DIY (1 hr)*** is the most popular activity for tourists.

Food is another highlight you can expect, such as ***Ban Tiao rice noodles*** for lunch! It is approx. 30 min away by drive, after lunch, about 14:30, we will head to Tainan city (*drive for an hour approx.*).



The last highlight of the day is this island's oldest ***Confucius Temple in Tainan***, (was built in 1666) representing the Chinese ancient culture! This historical spot is considered as the first "school" in Taiwan, presenting the Confucian philosophical values today. ***Tainan Chihkan Tower*** (in Chinese: Chihkanlou) is built by the Dutch in 1652. It was originally called Provintia. In Dutch it means eternity. At night, you can expect to explore savory snacks at ***Yungle Market*** nearby. The speciality in Tainan is "WaGui", specialized in steamed rice bowl cake, and it's quite chewy. Other suggestion is "Spring Roll", wrapped with a variety of ingredients such as deep-fried egg crisps, cabbages, carrots, garlic, spinach, shredded pork, shrimp, broad beans, peanut powder sugar.

Tainan (Anping) — Chiayi (Alishan)

We will spend about a half day in this historical city, ***Tainan***! Your knowledgeable guide will give you a comprehensive history lesson in Anping area, including ***Anping Old Fort & Anping Old Street***. ***Anping tree house*** was once the warehouse of the Tait & Company, but the giant banyan trees took over the abandoned building after years of neglect. It will surely be a delight for urban explorers and photographers alike. Afternoon, drive to (*2.5 hr approx.*) the accommodation is at ***Alishan (in Chiayi)*** for wonderful sunrise in the next early morning.

DAY 07 (THU)



DAY 08 (FRI)

Chiayi (Alishan) — Taipei



Alishan is the highly praised spot in Taiwan to watch a mesmerising sunrise. To watch the ***wonderful sunrise*** is definitely worth waking up before dawn (depends on the sunrise time & weather) by taking The ***Alishan Forest Railway*** (was built by the Japanese government for timber transportation in 1912.) After back to accommodation for breakfast, we will focus on in deeper mountain & forest area. Located at an altitude of over 2,100 meters, ***Sister Ponds*** in Alishan are in fact two individual alpine ponds and there is a sad story behind the scenic ponds. Walking pass through ***Shouzen Temple***, ***The Sacred Tree (in Chinese: Shenmu)*** is one of the most notable attractions with an age over 3,000 years. The hiking trail will bring you to experience unique the train for indulging in mysterious giant trees. Estimated at 3 p.m., we drive (*2 hours approx.*) to take ***High Speed Railway (HSR 0666)***, sending us back to central Taipei. (*Chiayi 17:32-Taipei 18:59 estimated*)

DAY 09 (SAT)

Fly back to UK from TPE airport

One or few extra day tours (or free time) in Taiwan will be a perfect option. Please refer to optional experiences or talk to your agent. Our chauffeur driver will meet & greet you at the hotel lobby, then transfer you directly to the airport.





TASTE OF TAIWAN / 9 Days 7 Nights

	Accommodation	Meals
DAY 02 (SAT)	Taipei Garden Hotel or the same level (5 stars)	N/A
DAY 03 (SUN)	Silks Place Taroko or the same level (5 stars)	Breakfast at hotel
DAY 04 (MON)	Papago international resort or the same level (4 stars)	Breakfast at hotel
DAY 05 (TUE)	The Grand HiLai Hotel or the same level (5 stars)	Breakfast at hotel
DAY 06 (WED)	Silk Place Tainan or the same level (5 stars)	Breakfast at hotel
DAY 07 (THU)	Alishan House or the same level (4 stars)	Breakfast at hotel
DAY 08 (FRI)	Taipei Garden Hotel or the same level (5 stars)	Breakfast at B&B
DAY 09 (SAT)	N/A (on flight)	Breakfast at hotel

Price Guide & Other Info

From **£3700 / person**
*Private Tour (minimum two people)

Included

- Airport arrival and departure transfers (*chauffeur drive*)
- 4-5 stars Hotels/B&B accommodation (*twin room basis*)
- Meals & transportation & entrance fee tickets as indicated
- Professional English-speaking tour guide(s)
- International economy class return flights (UK-Taiwan) (*upgrading to premium or business class available!*)

Not Included

- Single supplement from £935
- Other meals & transportation & entrance fee tickets as not indicated
- Insurance of any kind
- Personal expenditure, such as laundry service, souvenirs, internet SIM cards, snacks etc.

Departs all year round, every Friday
Contact us for the latest information

Terms & Conditions Applied



*WEB [en.ourstravel.com]

*Phone: 020 7388 8955

*E-mail: sales@ourstravel.com

*Office Hour: 09:30-17:30 /Monday-Friday

*Address:117A The Broadway, NW7 3TG, London, UK